

80LB TOW-BEHIND SPREADER



Instruction & Assembly

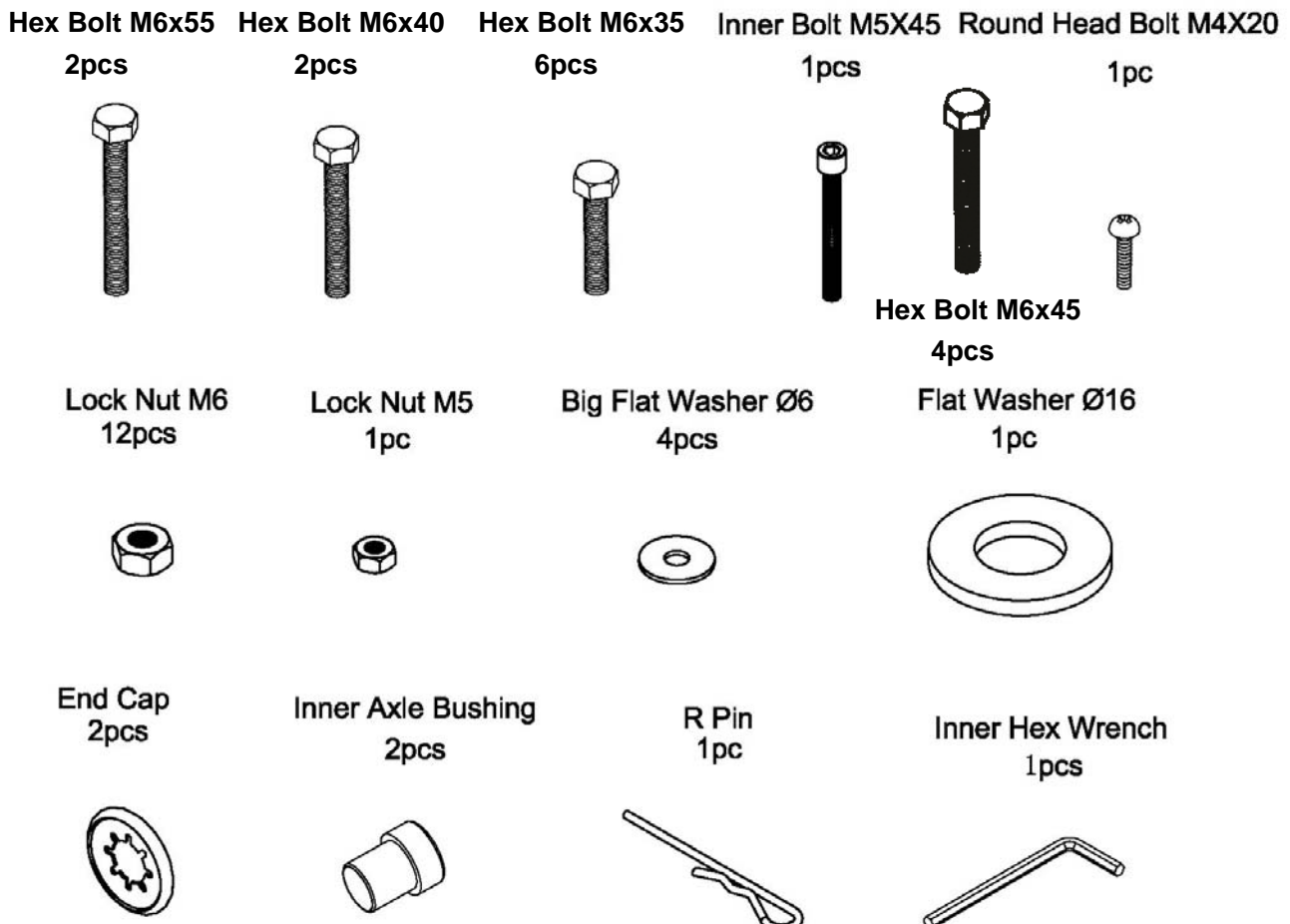
SAVE THESE INSTRUCTIONS FOR FUTURE REFERENCE

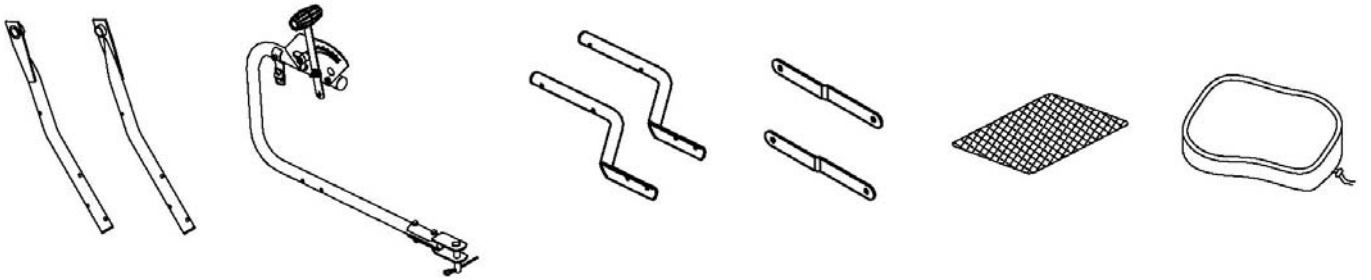
SAFETY RULES

READ THE DIRECTIONS BEFORE ASSEMBLY

- Read the towing vehicle owners manual and towing vehicle safety rules. Know how to operate your tractor before using the tow-behind spreader.
- Read the chemical label instructions and cautions for handling and applying the chemicals purchased for spreading.
- Wear eye and hand protection when handling and when applying lawn or garden chemicals.
- Never operate tractor and spreader attachment without wearing substantial footwear, and do not allow anyone to ride or sit on spreader attachment frame.
- Never allow children to operate the tractor or spreader attachment, and do not allow adults to operate without proper instructions.
- Always begin with the transmission in first (low) gear and with the engine at low speed, and gradually increase speed as conditions permit.
- When towing spreader do not drive too close to a creek or ditch and be alert for holes and other hazards which could cause you to loose control of the spreader and tractor.
- Before operating vehicle on any grade (hill) refer to the safety rules in the vehicle owner's

REMOVE AND IDENTIFY LOOSE PARTS FROM CARTON AND BAG





Wheel Assembly Frame
2pcs/1pair

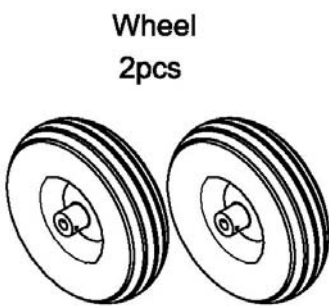
Gauge & Lever
Assembly
1pc

Connecting Rod
Assembly
2pcs

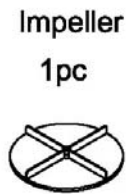
Connecting
Plate
2pcs

Hopper
Screen
1pc

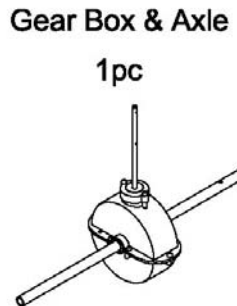
Rain Cover
1pc



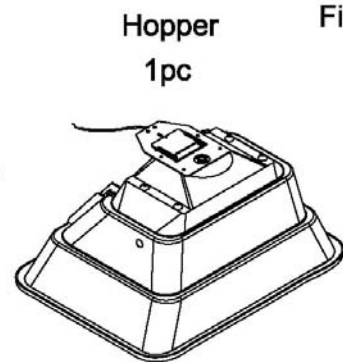
Wheel
2pcs



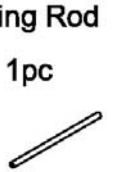
Impeller
1pc



Gear Box & Axle
1pc

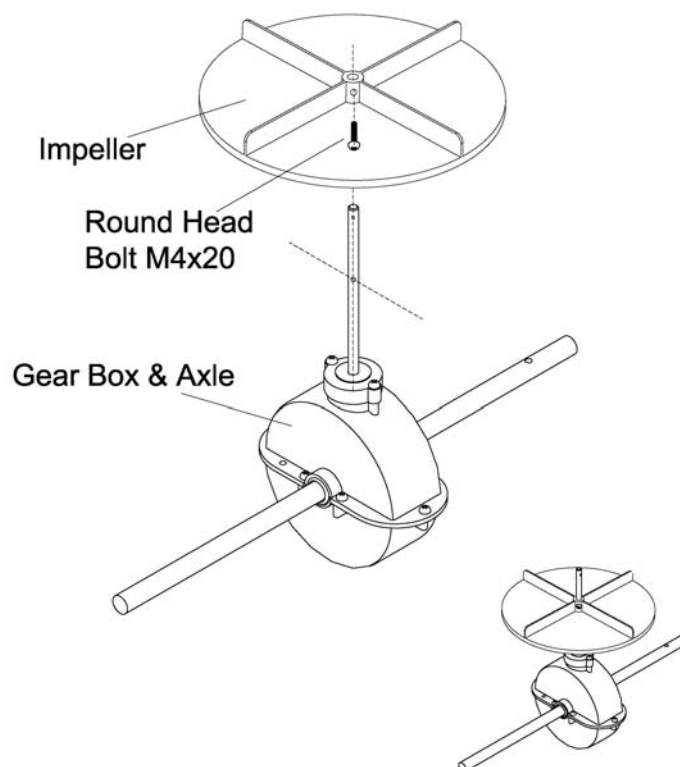


Hopper
1pc

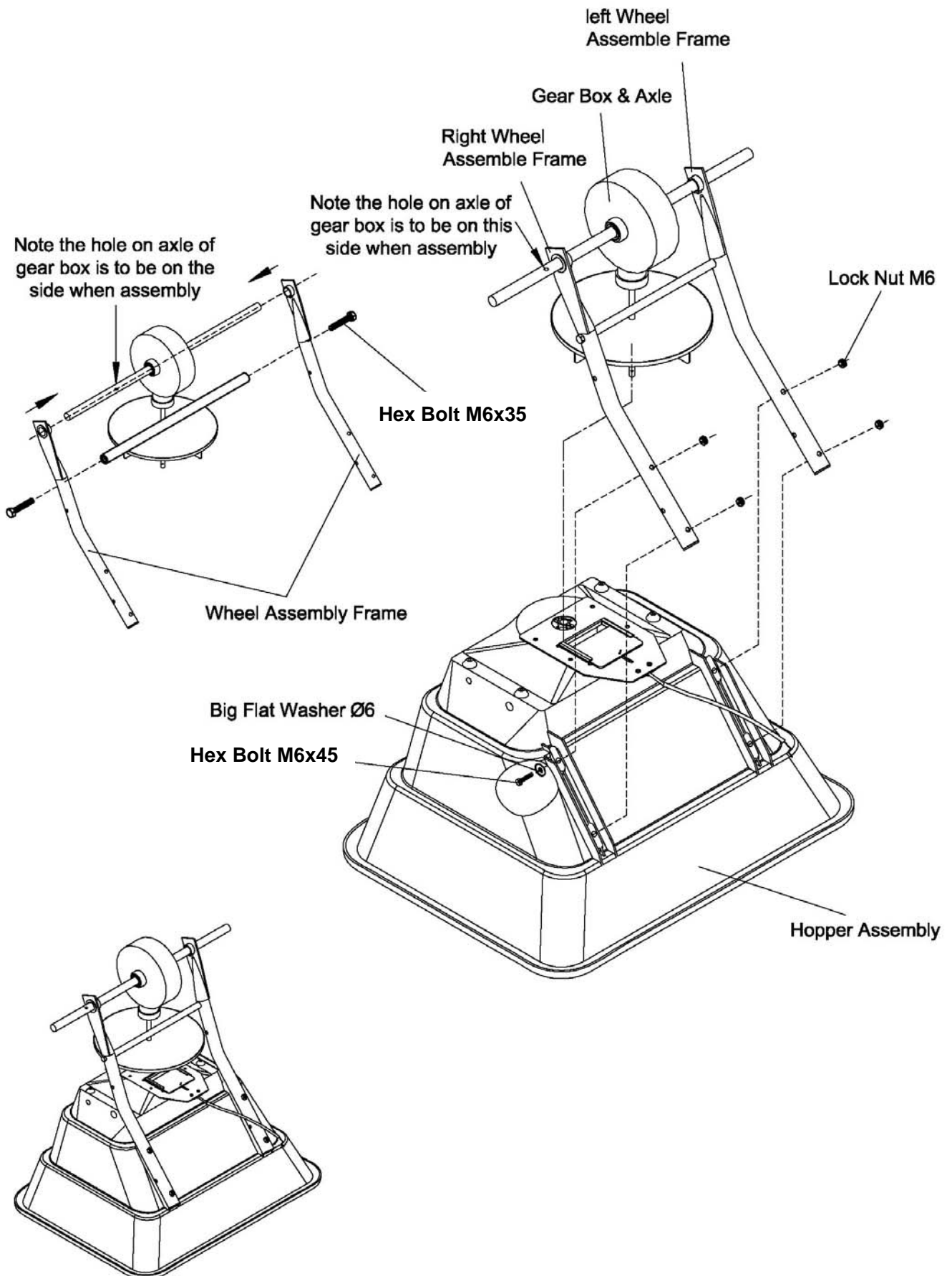


Fixing Rod
1pc

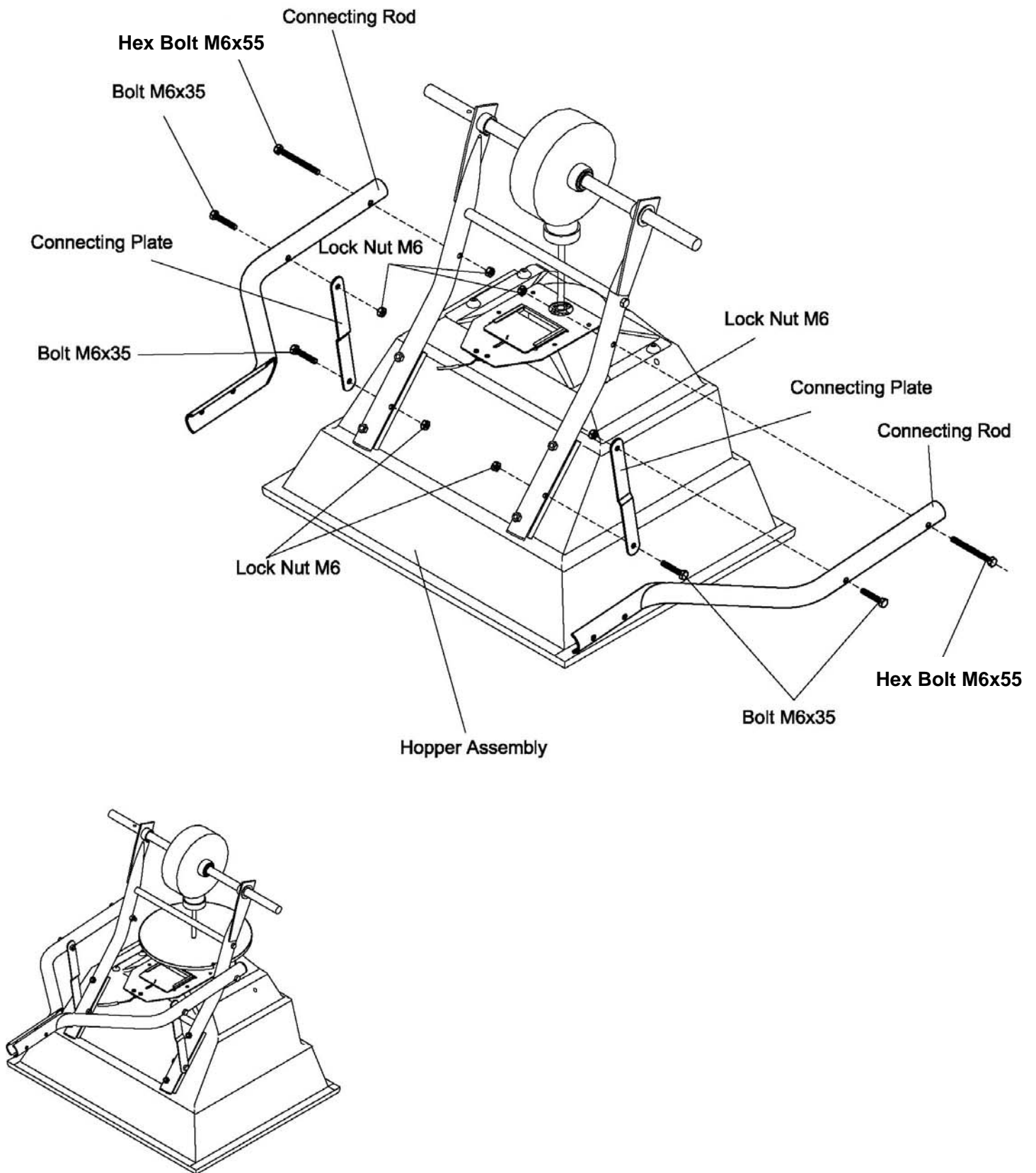
STEP1: Install Impeller onto the Gear Box & Axle Assembly. Insert Round Head Bolt M4x20 through impeller then through Gear Box Axle.



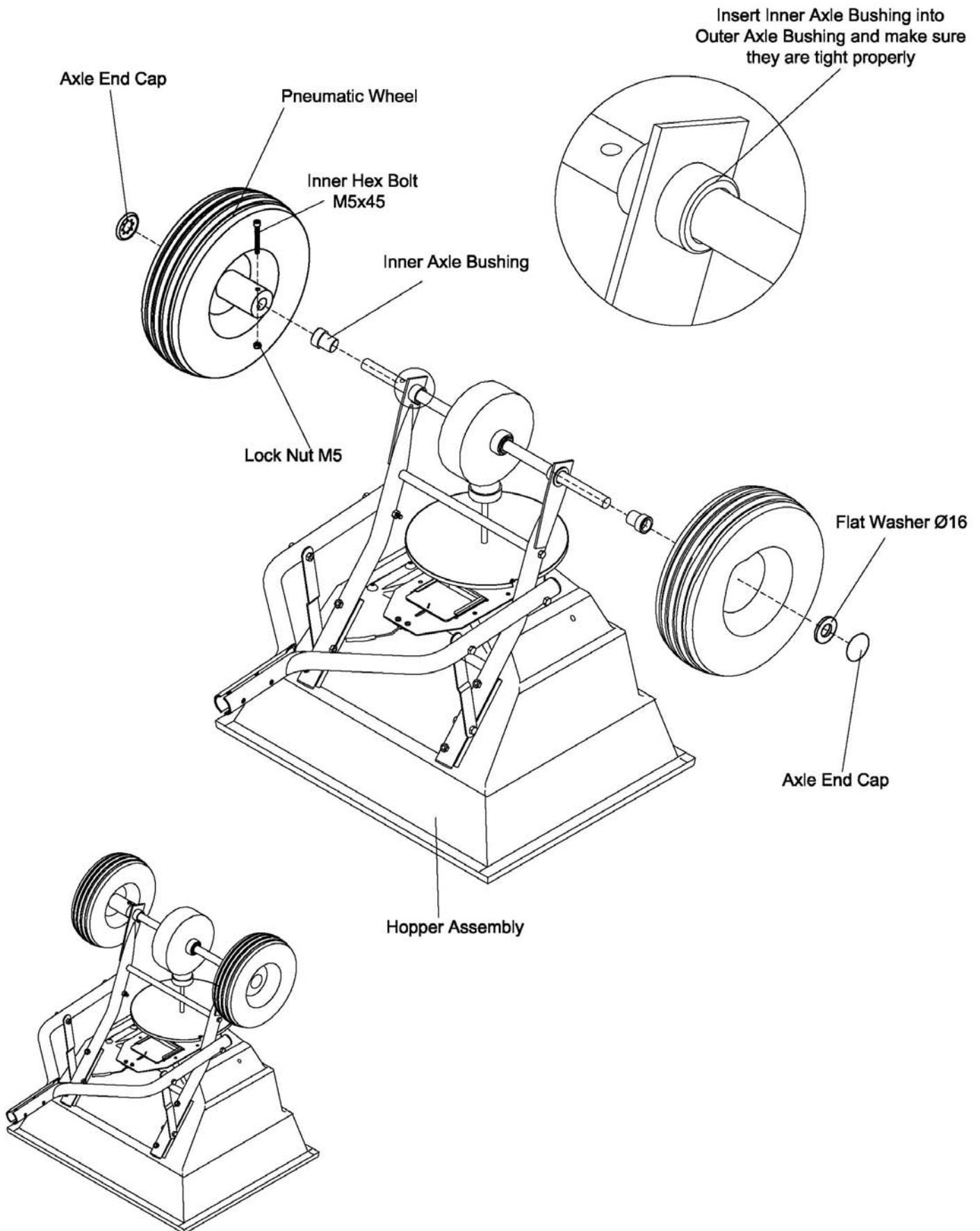
STEP 2: Attach the Wheel Assembly Frame on each side of the Gear Box Axle and Fixing Connecting Rod, insert two bolts M6x35 into the Fixing Connecting Rod through Wheel Assembly Frame. Make sure the hole on Axle of Gear Box is to be on the right side when assembly as shown. Attach Wheel Assembly Frames and Support Leg onto Hopper using bolts M6x45, lock nuts M6 and Big Flat Washers Ø6. Note: The bolts and nuts needn't be tightened yet.



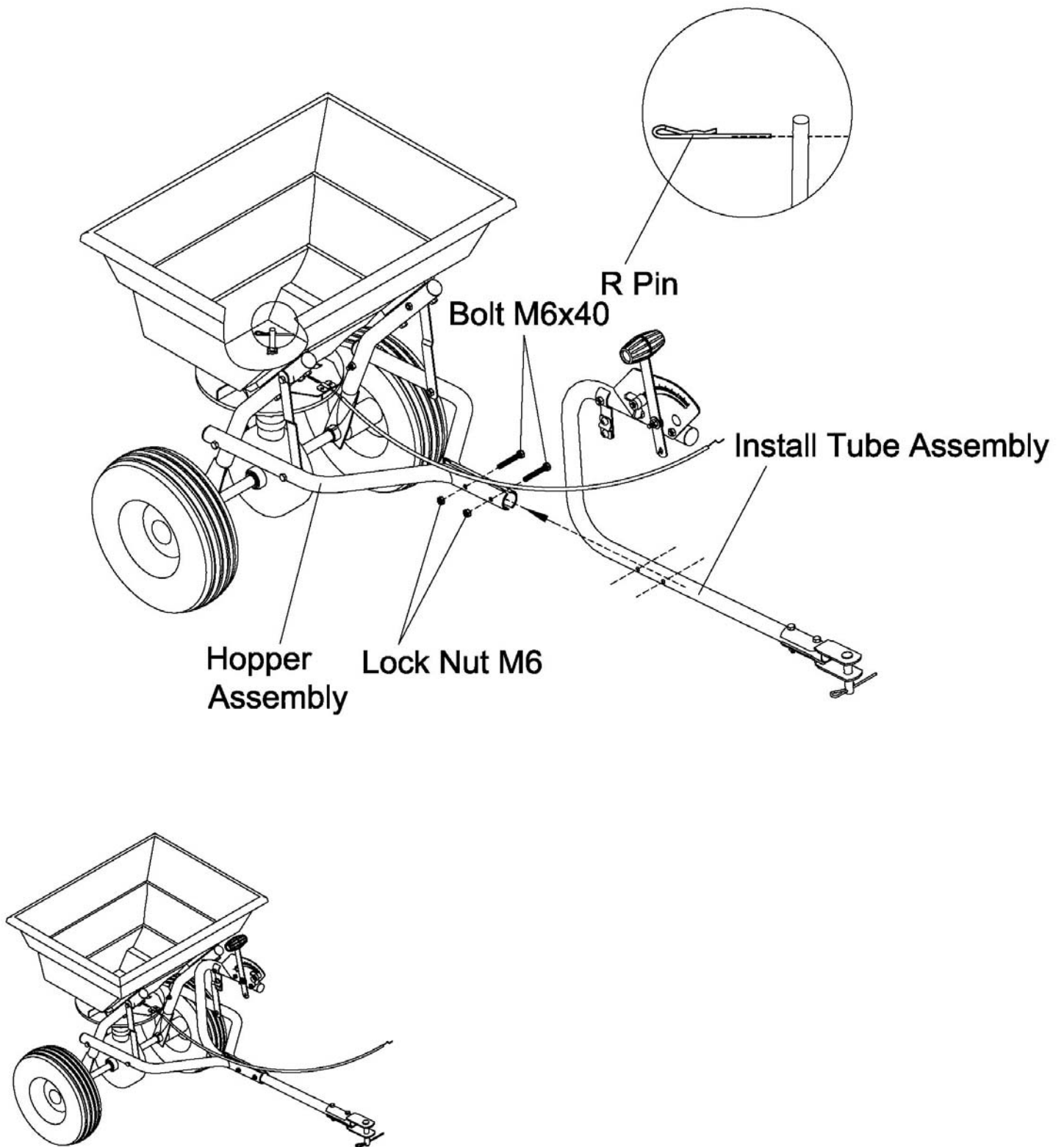
STEP 3: Install one end of the connecting plate on the wheel frame by Bolt M6x35 and Lock Nut M6. Then install the connecting rod on the wheel frame by Bolt M6x55 and Lock Nut M6 and fixed the connecting plate with connecting rod by Bolt M6x35. Note: The Bolt and Nuts needn't be tightened.



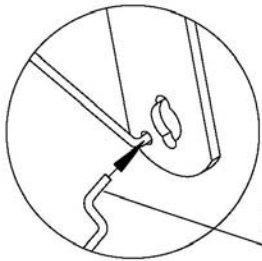
STEP 4: Insert Inner Axle Bushing into Outer Axle Bushing and make sure they are tight neatly. Install right Wheel Assembly to right Axle using inner hex bolt M5x45 and lock nut M5, and then install the Cap onto right Axle using a wooden or rubber hammer. Now install left Wheel Assembly to left Axle, put a flat washer Ø16 and install the Cap onto left Axle using a wooden or rubber hammer.



STEP 5: Put the install tube assembly to hopper assembly using Bolt M6x40 and Lock Nut M6. **NOW GO BACK AND TIGHTEN ALL NUTS AND BOLTS STARTING WITH FIRST STEP. DO NOT OVER TIGHTEN.**



STEP 6: FINAL ADJUSTMENTS. When you finished all above steps, You don't need to do the following steps. If they are not match neatly, you may need to do the following steps. To operate this spreader, push the handle to the top position (upwards). You may move the position of Wing nut on Gauge & Lever to adjust the spacer of three holes between hopper and adjustable plate as per your need when spreading.



Insert the steel string to the small hole

To operate this spreader push the handle to the top position

Push the handle to the lowest position (downwards), use your handle to adjust the adjustable plate to make sure the big hole at the bottom of hopper just match the hole on adjustable plate neatly

Release these 2 bolts
Tighten these 2 bolts again

You should turn the impeller by this direction when pushing forward

(*) Push the adjustable handle on Gauge & Lever assembly to the proper setting while spreading.

(*) Push the adjustable handle on Gauge & Lever assembly to the lowest position when stop spreading.

GENERAL WARNINGS

Operator must read and understand all safety and warning information, operating instructions, maintenance and storage instructions before operating this equipment. Failure to properly operate and maintain the lawn roller could result in serious injury to the operator or bystanders.

Operation Warnings

- Do not at any time carry passengers sitting or standing on the lawn roller.
- Do not allow children to play on, stand upon or climb on the spreader.
- Do not exceed rated capacity of 80lb
- Replace or repair damaged or worn parts immediately.
- To avoid personal injury and/or equipment damage **DO NOT EXCEED 5 MPH.**
- Only tow with recommended vehicles (Lawn/Garden Tractors and ATVs).
- Always inspect the spreader before using to assure it is in good working condition.
- Always keep hands and feet clear from moving parts while operating the equipment.
- **DO NOT** use if the spreader is damaged or worn as this may cause injury to the operator or bystanders.
- **ALWAYS** make sure the spreader is secure and locked to the hitch of the approved vehicle before operating.
- **Never** add material to the spreader unless it is attached to the tractor.

Maintenance and Storage

MAINTENANCE

- After each use clean material out of hopper.
- Rinse/dry inside and outside of the spreader after each use.
- Before operating make sure the tires have the **RECOMMENDED TIRE PRESSURE.**
- Periodically check all fasteners for tightness.
- Annually clean and lightly lubricate parts.
- Use a glossy enamel spray paint to touch up scratched or worn painted metal surfaces.
- Never exceed load capacity rating of 80lbs it will damage the spreader.

IMPORTANT:

If a part needs replacement, only use parts that meet the manufacturer's specifications. Replacement parts that do not meet specifications may result in a safety hazard or poor operations.

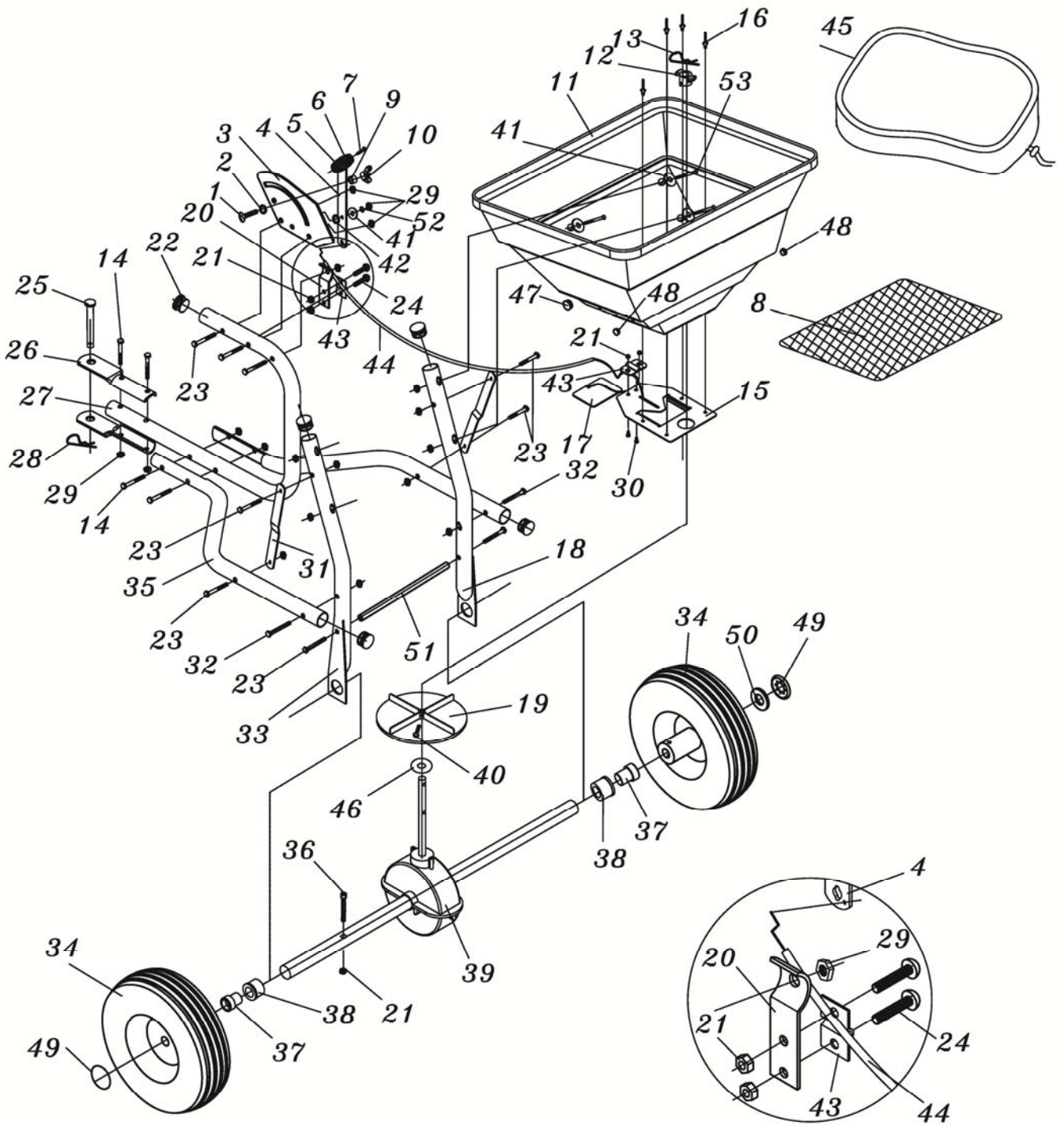
STORAGE

- Never allow material to remain in the hopper for extended periods of time.
- Before storing make sure the spreader is clean and dry for years of trouble free service.
- Store indoors or protected area during severe weather and winter months.

WARNING

ALWAYS maintain the proper tire pressure. **DO NOT** over or under inflate the tires as serious injury may result. **ALWAYS** keep the tires at **25PSI.**

PARTS DRAWING



PARTS LIST

Part #	Description	Qty	Part #	Description	Qty
1	Carriage Bolt M6x25	1	28	R Pin Ø3	1
2	Tooth Washer Ø8	1	29	Lock Nut M6	18
3	Gauge & Lever Assembly	1	30	Screw M5X12	2
4	Adjust Handle Pole	1	31	Connect plate	2
5	Adjust Handle A	1	32	Bolt M6x55	2
6	Adjust Handle B	1	33	Wheel Frame Assembly (Right)	1
7	Screw M4x18	1	34	Pneumatic Wheel	2
8	Hopper Screen	1	35	Connect Rod	2
9	Spacer	1	36	Inner Hex Bolt M5x45	1
10	Wing Nut M6	1	37	Inner Axle Bushing	2
11	Hopper	1	38	Outer Axle Bushing	2
12	Center Cover	1	39	Gear Box & Axle Assembly	1
13	R Pin Ø2	1	40	Screw M4x20	1
14	Bolt M6x40	4	41	Big Flat Washer Ø6	5
15	Fixed Plate	1	42	Nylon Washer	1
16	Screw Ø5X12	4	43	Line Clamp Press Plate	2
17	Adjustable Plate	1	44	Control Rod	1
18	Wheel Frame Assembly (Left)	1	45	Rain Cover	1
19	Impeller	1	46	Thin Washer	1
20	Line Clamp Bottom Plate	1	47	Big End Cap	1
21	Lock Nut M5	5	48	Small End Cap	2
22	Tube End Cap	5	49	Axle End Cover	2
23	Bolt M6x35	9	50	Flat Washer Ø16	1
24	Round Head Bolt M5x10	2	51	Fixing Connecting Rod	1
25	Round Head Pin	1	52	Spring Washer Ø6	1
26	Tow Bar Connect Plate	2	53	Hex Bolt M6x45	4
27	Install Tube Assembly	1			

Limited Warranty

Warranty

For one year from the date of purchase YTL International will replace for the original purchaser, or repair the push spreader. The warranty will not apply to any unit which was not assembled correctly, misused, overloaded or which has been used or operated contrary to our instructions, or which has been repaired or altered by anyone other than an authorized representative.

Warranty Exclusions

This warranty does not cover cosmetic defects such as paint, decals or wear items such as tires. This warranty will not cover failures or problems due to acts of God, or events or forces beyond the control of the manufacturer.

Normal Wear Exclusion

The spreader needs periodic service to perform well. This warranty does not cover repair when normal use has exhausted the life of a part or the equipment as a whole.

Installation, Use and Maintenance Exclusion

This warranty will not apply to parts and/or labor if the push spreader has been misused, neglected, involved in an accident, abused, loaded beyond its limits, modified or assembled incorrectly. Normal maintenance is not covered under this warranty.

Limits of Implied Warranty and Consequential Damage Exclusion

YTL International disclaims any obligation to cover any loss of time, use of this product, freight, or any incidental or consequential claim by anyone from using this push spreader. THIS WARRANTY IS IN LIEU OF ALL OTHER WARRANTIES, EXPRESS OR IMPLIED, INCLUDING WARRANTIES OF MERCHANTABILITY OR FITNESS FOR A PARTICULAR.

An exchange unit will be subject to the original warranty. The length of the warranty governing the exchanged unit will have the date as the purchase date of the original unit. This warranty gives you certain legal rights which may change from state to state. Your state may also have other rights you may be entitled to that are not listed within this warranty.

Contact Information

YTL International
17517 Fabrica Way, Suite H
Cerritos, CA 90703
Phone: (888) 723-6534
Phone: (562) 404-8016
Fax: (562) 404-8013