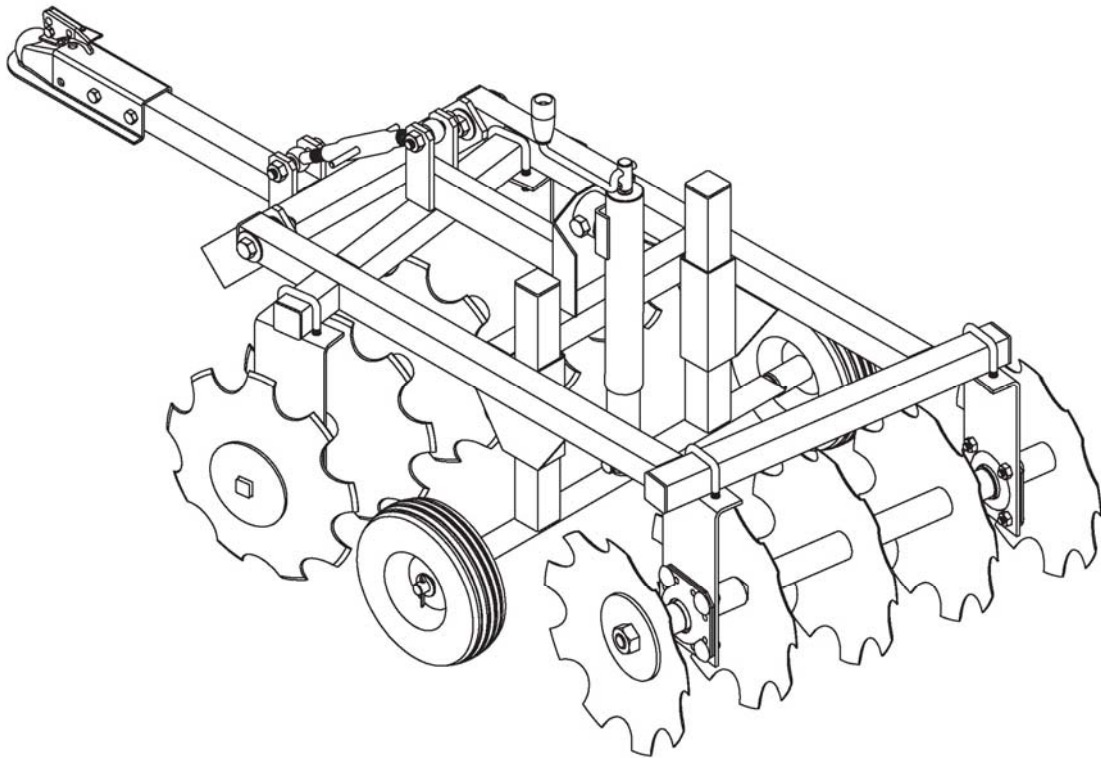


# TOW BEHIND ATV COMPACT DISC

## OWNER'S MANUAL



### **IMPORTANT**

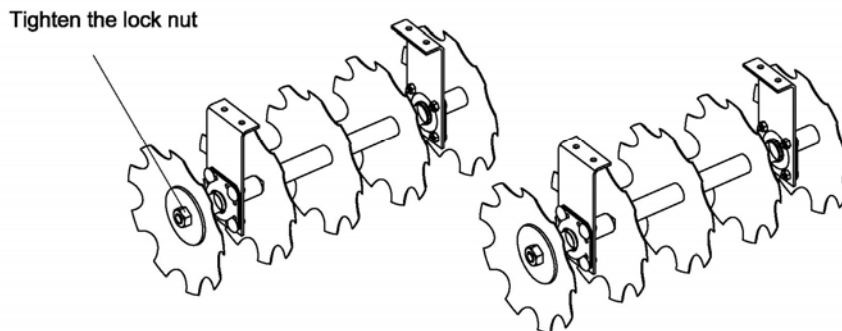
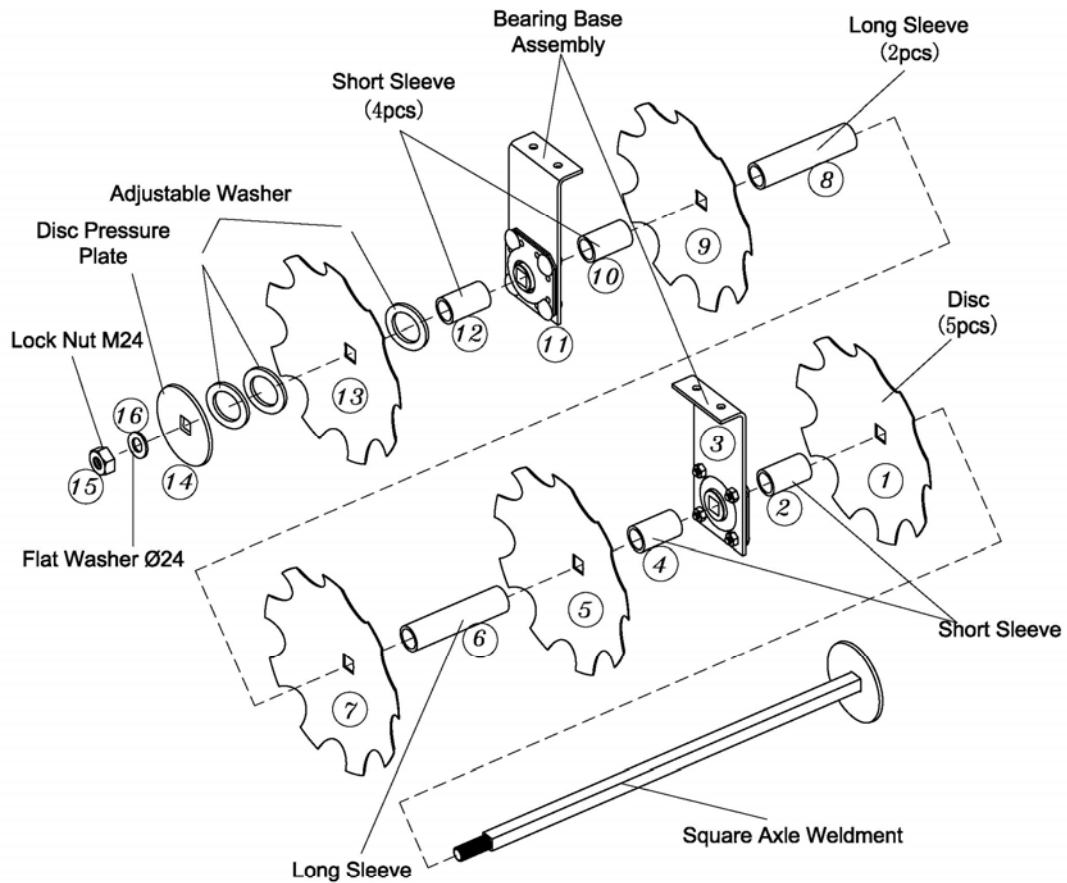
Read and follow all Safety Precautions and Instructions Before Operating this Equipment.



# ASSEMBLY INSTRUCTIONS FOR ATV DISC

Step 1: Assemble the two disc gang assemblies as shown in diagram

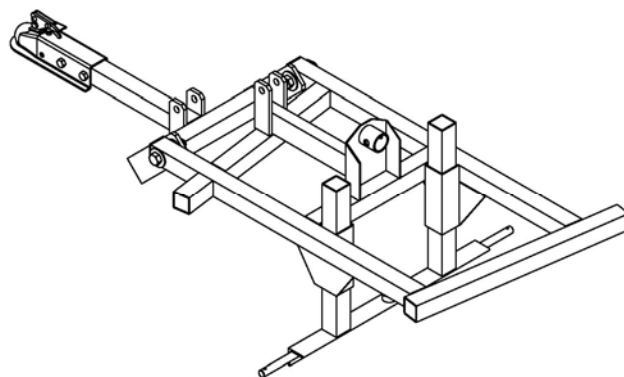
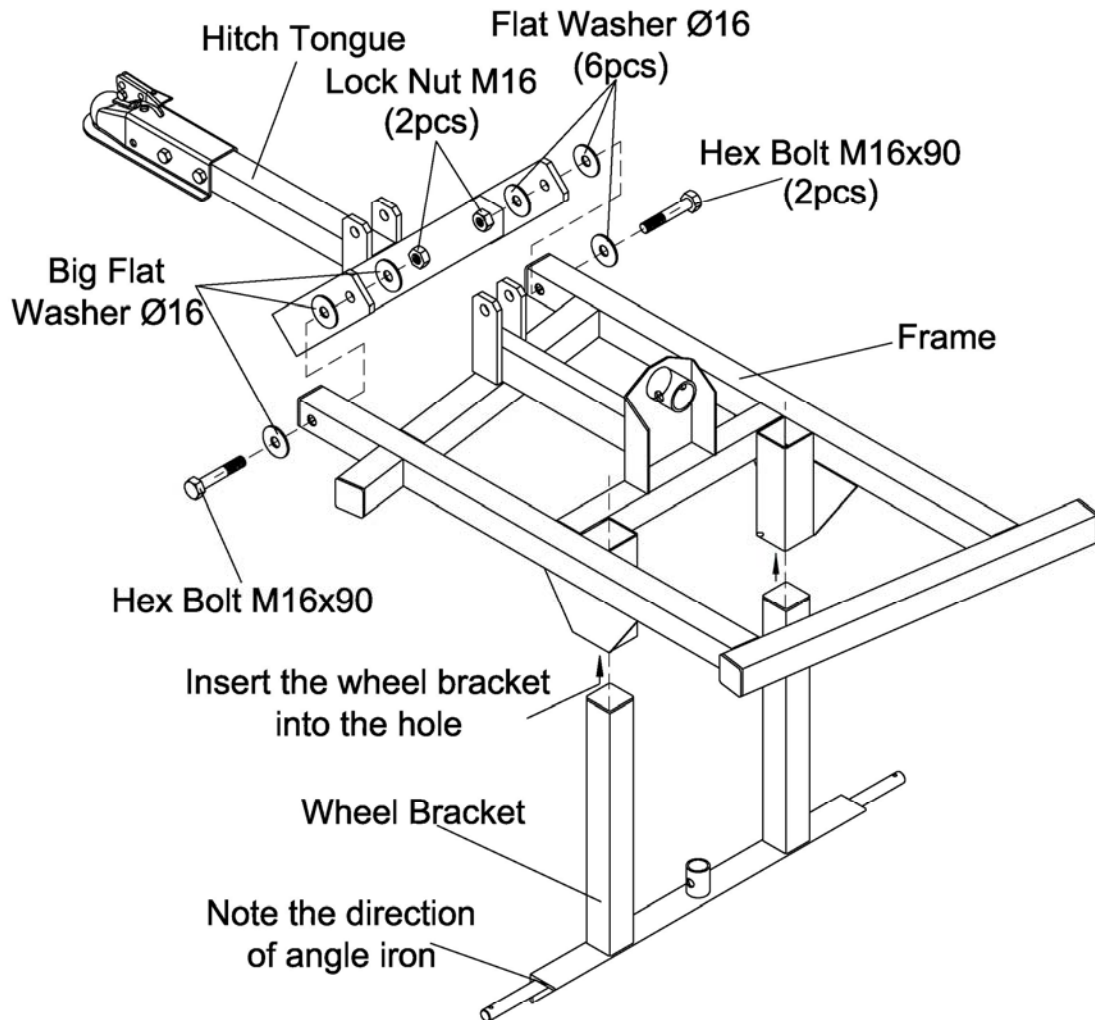
**Note: The diagram shows each item number as it is assembled onto the Square Axle Weldment. Tighten Lock Nut so all disc's are tight on Square Axle Weldment.**



Step 2: Assemble the Hitch Tongue to the Frame using the Hex Bolts, Big Flat Washers and Lock Nuts. Note: Do not over tighten Hex Bolts and Lock Nuts, the Hitch Tongue should rotate up and down freely.

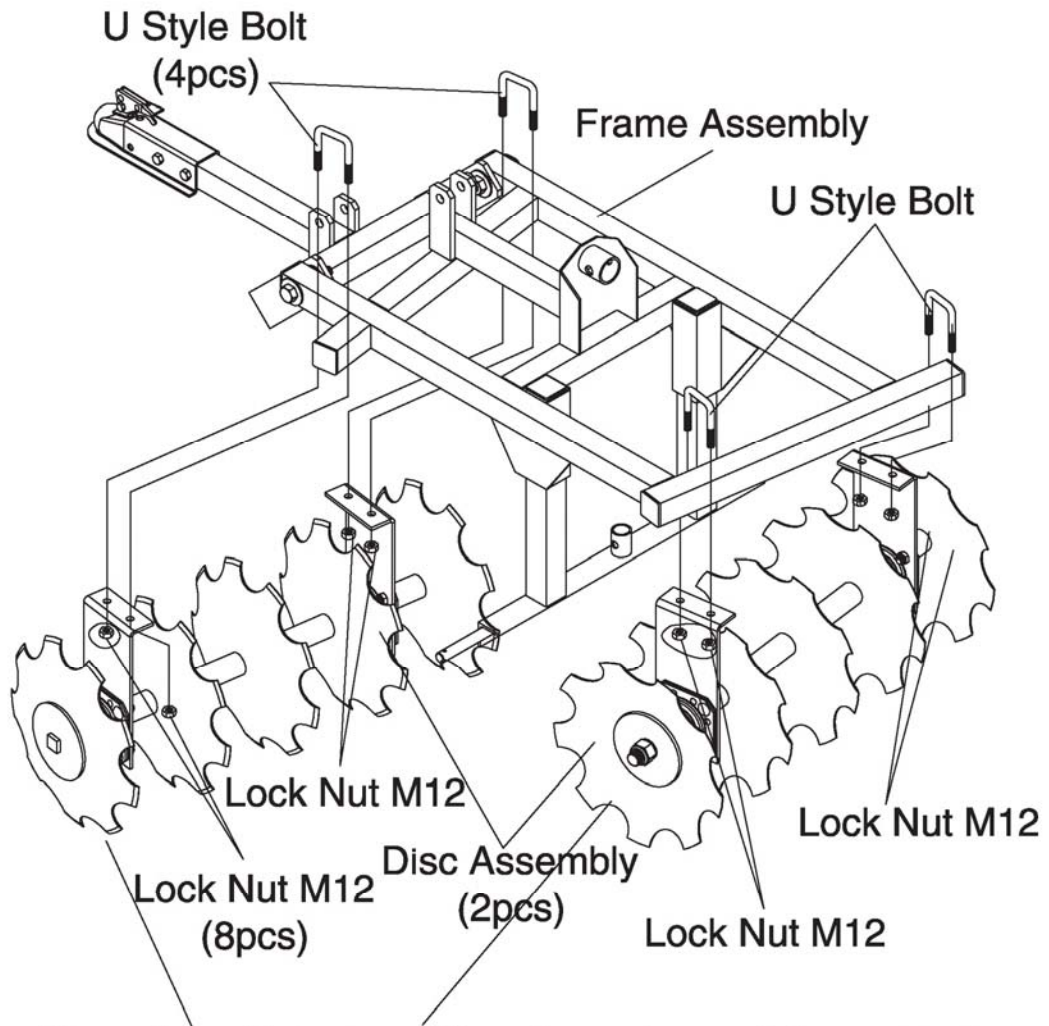
Install the Wheel Bracket into the frame as shown in diagram.

**Note: Check the direction of angle iron on the wheel bracket as shown in diagram.**

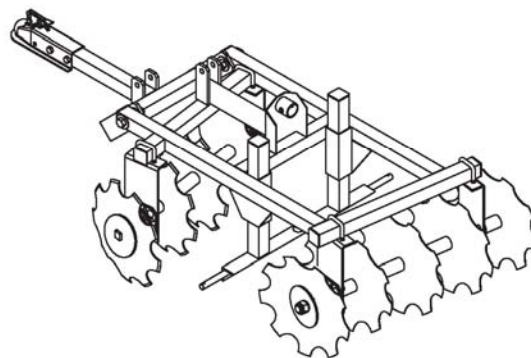


Step 3: Install the two Disc Gang assemblies to the frame using the U bolts and Lock Nuts as shown in diagram.

**Note: Install the two Disc Gang assemblies in the opposite direction, if they are installed incorrectly the disc will not function properly.**

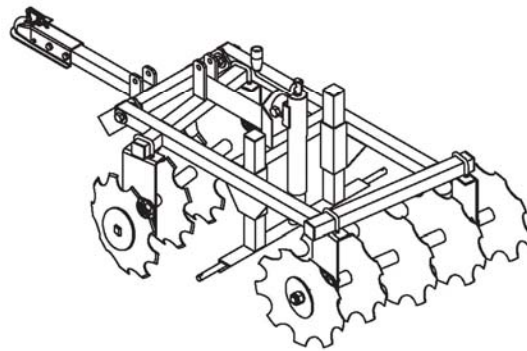
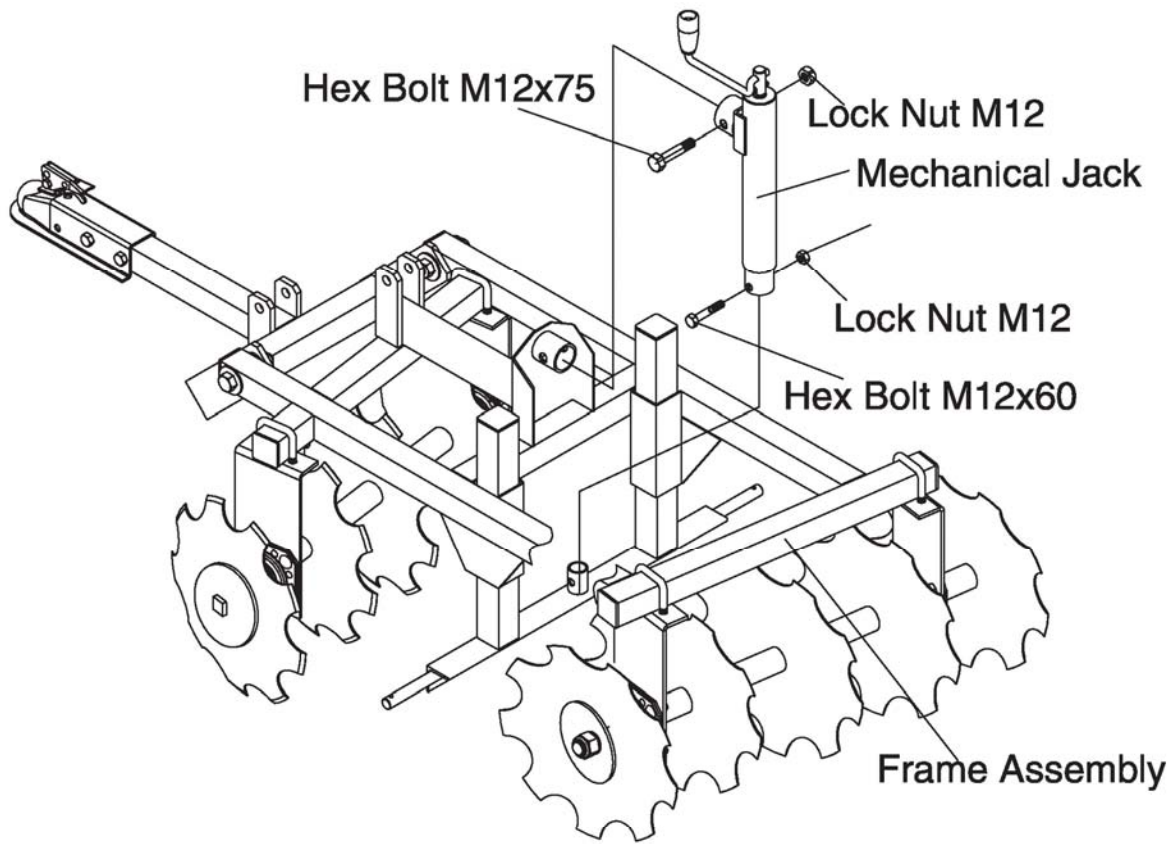


**Note: Install the two Disc Gang Assemblies onto the frame in the opposite direction.**

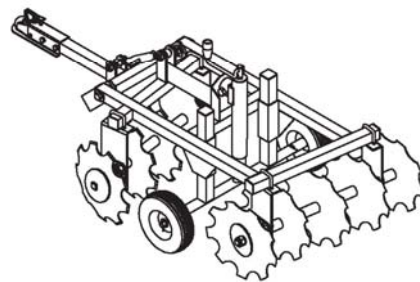
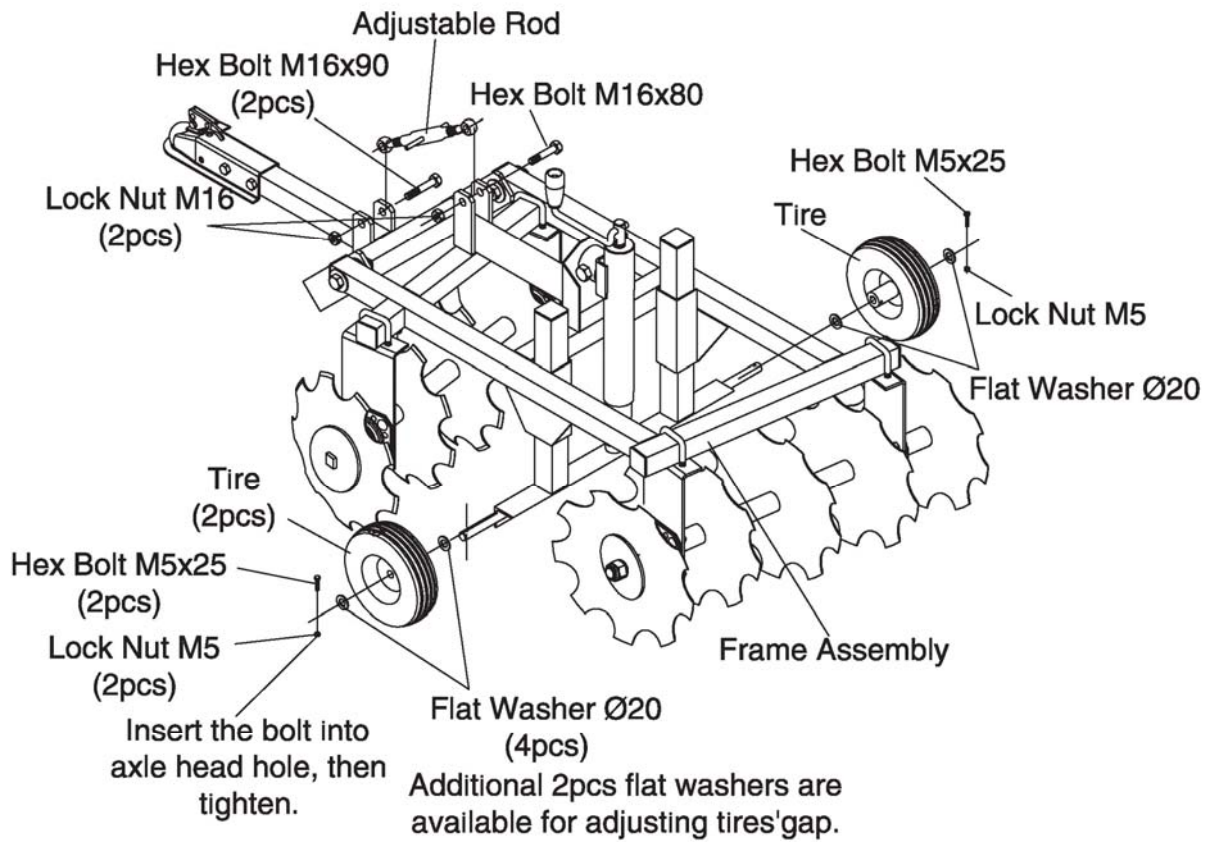


Step 4: Install the Mechanical Screw Jack onto the frame as shown in the diagram using the Hex bolts and Lock Nuts.

**Note: Do not over tighten these two bolts and Lock Nuts.**

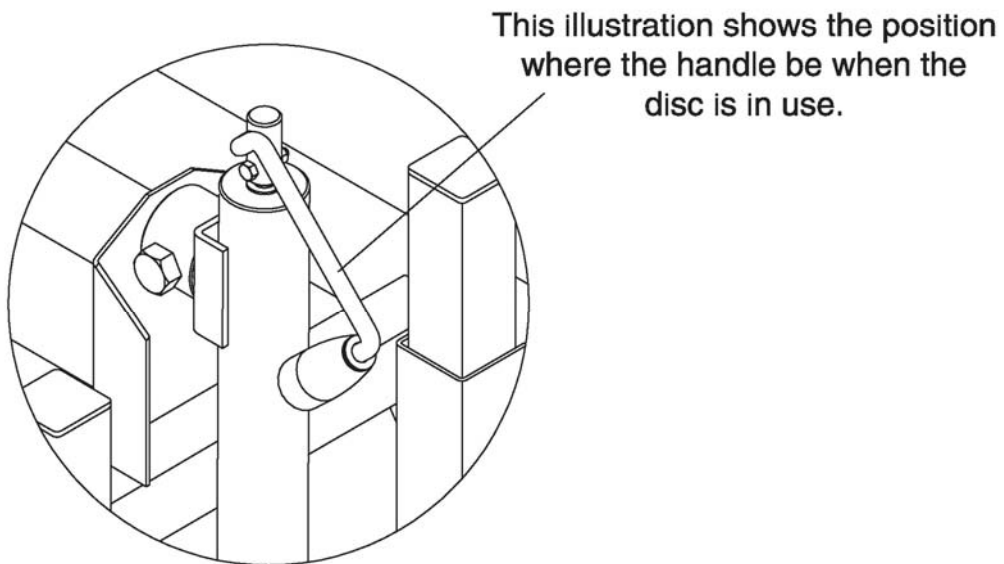
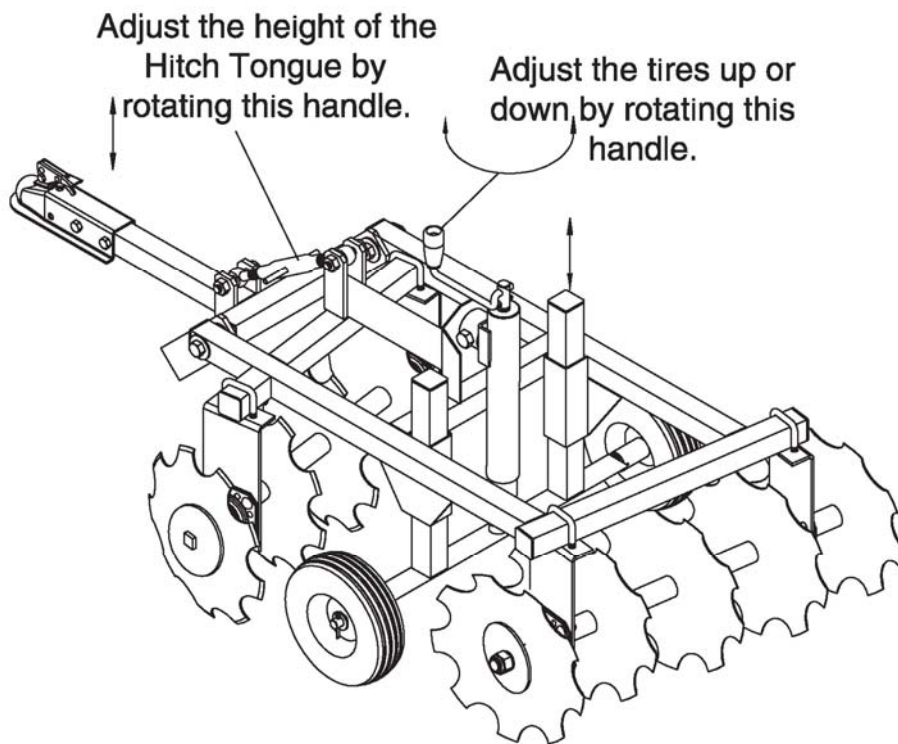


Step 5: Install Adjustable Rod to the Hitch Tongue and the Frame using the Hex Bolts and Lock Nuts as Shown. Install the Tires onto the Wheel bracket using the Flat Washers, Hex Bolts and Lock Nuts as shown.

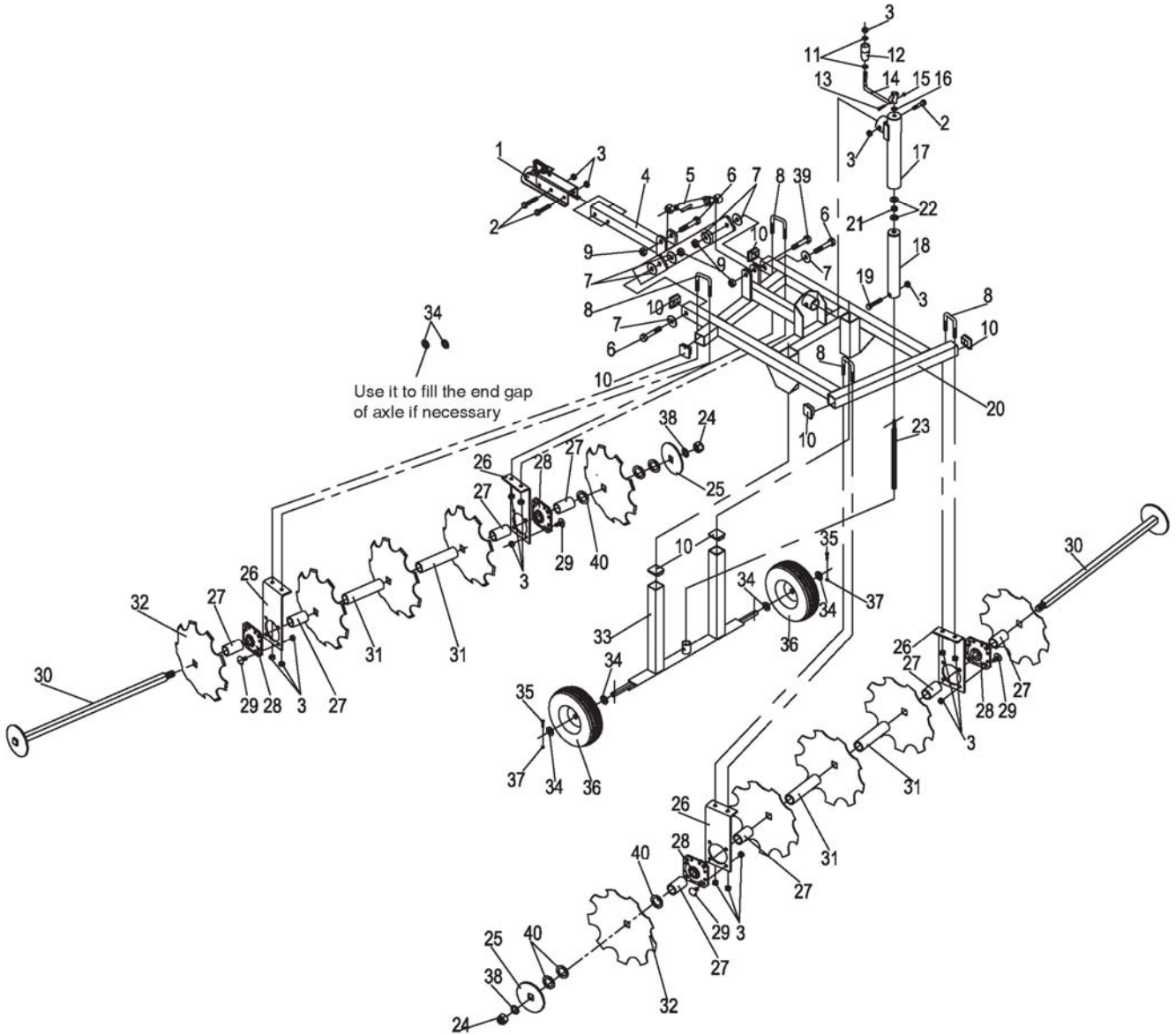




Step 6: There maybe some adjusting of the Hitch Tongue for the height of towing vehicle, this function can be performed by rotating handle on Adjusting Rod. Rotating the handle on the Mechanical Screw Jack will raise the tires up down.



# Parts Drawing & Parts List





## Parts Drawing & Parts List

Ref#	Drawing No.	Description	Qty
1	Z103-10000	2" Coupler	1
2	9101-12075-DX	Hex Bolt M12x75	3
3	9206-12000-DX	Hex Lock Nut M12	29
4	N630-20000	Hitch Tongue	1
5	N630-50000	Adjustable Rod	1
6	9101-16090-DX	Hex Bolt M16x90	3
7	9302-16000-DX	Big Flat Washer Ø16	6
8	N630-00001-DX	U Style Bolt	4
9	9206-16000-DX	Hex Lock Nut M16	4
10	N630-00011	End Cap	7
11	T200-10011-DX	Flat Washer	2
12	N630-00008	Handle Grip	1
13	9101-06030-DX	Hex Bolt M6x30	1
14	N630-62000	Handle	1
15	9206-06000-DX	Hex Lock Nut M6	1
16	9302-12000-DX	Big Flat Washer Ø12	1
17	N630-60000	Outside Sleeve	1
18	N630-61000-DY	Inside Sleeve	1
19	9101-12060-DX	Hex Bolt M12x60	1
20	N630-10000	Frame	1
21	9608-51101	Bearing	1
22	N630-00009-DX	Thick Flat Washer Ø12	2
23	N630-00010-DX	Threaded Rod	1
24	9206-24000-DX	Hex Lock Nut M24	2
25	N630-00007	Disc Pressure Plate	2
26	N630-00003	Disc Support Plate	4
27	N630-00006-FH	Short Sleeve	8
28	N630-41000	Bearing Base Assembly	4
29	9114-12030-DX	Carriage Bolt M12x30	16
30	N630-40000	Square Axle Weldment	2
31	N630-00005-FH	Long Sleeve	4
32	N630-00004	Disc	10
33	N630-30000	Wheel Bracket	1
34	N150-00010	Flat Washer Ø20	6
35	9101-05025-DX	Hex Bolt M5x25	2
36	N630-00002	Tire	2
37	9206-05000-DX	Hex Lock Nut M5	2
38	9301-24000-DX	Flat Washer Ø24	2
39	9101-16080-DX	Hex Bolt M16x80	1
40	9301-36000-DX	Flat Washer Ø36	6

# Limited Warranty

## **Warranty**

For one year from the date of purchase YTL International will replace for the original purchaser, or repair the disc. The warranty will not apply to any unit which was not assembled correctly, misused, overloaded or which has been used or operated contrary to our instructions, or which has been repaired or altered by anyone other than an authorized representative.

## **Warranty Exclusions**

This warranty does not cover cosmetic defects such as paint, decals or wear items such as tires. This warranty will not cover failures or problems due to acts of God, or events or forces beyond the control of the manufacturer.

## **Normal Wear Exclusion**

The disc needs periodic service to perform well. This warranty does not cover repair when normal use has exhausted the life of a part or the equipment as a whole.

## **Installation, Use and Maintenance Exclusion**

This warranty will not apply to parts and/or labor if the disc has been misused, neglected, involved in an accident, abused, loaded beyond its limits, modified or assembled incorrectly. Normal maintenance is not covered under this warranty.

## **Limits of Implied Warranty and Consequential Damage Exclusion**

YTL International disclaims any obligation to cover any loss of time, use of this product, freight, or any incidental or consequential claim by anyone from using this disc. THIS WARRANTY IS IN LIEU OF ALL OTHER WARRANTIES, EXPRESS OR IMPLIED, INCLUDING WARRANTIES OF MERCHANTABILITY OR FITNESS FOR A PARTICULAR.

An exchange unit will be subject to the original warranty. The length of the warranty governing the exchanged unit will have the date as the purchase date of the original unit. This warranty gives you certain legal rights which may change from state to state. Your state may also have other rights you may be entitled to that are not listed within this warranty.

## **Contact Information**

YTL International  
17517 Fabrica Way, Suite H  
Cerritos, CA 90703  
Phone: (888) 723-6534  
Phone: (562) 404-8016  
Fax: (562) 404-8013